

AccuMed

KN95 Protective Mask

DESIGNED TO EFFICIENTLY FILTER AIRBORNE PARTICLES

AC-KN95-HB



HEADBAND DESIGN



ANTI-DUST



COMFORTABLE

KN95
GB2626-2006

95% Filtration
Efficiency
Non-Oil

HEADBAND
ATTACHMENT

USE INSTRUCTIONS:

Please read the instructions provided in the manual carefully. Failure to follow all instructions and limitations regarding the use of the mask or failure to wear the mask during times of exposure can reduce the overall effectiveness of the protective mask which may cause sickness or death.

Ideal for use in the following industries:

Commercial Buildings, Design & Construction, Food Processing, Food Safety, General Manufacturing, Heavy Infrastructure, Mining, Oil & Gas, Transportation.

1. Headband design disposable KN95 face masks.
2. Provides particulate filtering for at least 95 percent filtration efficiency against certain non-oil based particles. Comfortable, light-weight mask with earloops and adjustable nosepiece for a secure fit and seal.
3. Store the mask away from contaminated areas when not in use.
4. Dispose of used masks in accordance with applicable regulations.

USE LIMITATIONS:

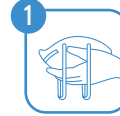
1. Do **NOT** enter or stay in a contaminated area under the following circumstances:
 - Atmosphere contains less than 19.5% oxygen.
 - Atmosphere contains oil aerosoles.
 - For protection against gases or vapors.
 - Contaminants or there concentrations are unknown or immediately dangerous to life or health.
 - For sandblasting, paint spraying, or asbestos.
2. Do **NOT** modify or misuse the mask.
3. Do **NOT** use the mask with beards or other facial hair that interferes with direct contact between the face and the edge of the mask, or any other conditions that may prevent a good facial seal.

The mask must be worn during all times of exposure and be disposed of after one time use.



WARNING This mask helps protect against certain contaminants. It may not eliminate the risk of contracting disease or infection. Misuse may result in sickness or death. Materials which may come into contact with the wearer's skin could cause allergic reactions to susceptible individuals.

FITTING INSTRUCTIONS:



Unfold the mask and pull the headbands outward.



Position the mask on your face with the adjustable metal nosepiece facing up.



Pull the headbands over your head. Place the bottom band below the ears and the top band on the crown of your head.



Press down to mold the metal nosepiece ensuring a tight-fitting seal around your nose.



Test the seal by cupping both hands over the protective mask. Then, begin to inhale and exhale sharply. If air leaks around the mask's edges, adjust the straps and reposition the nose piece until a proper seal is formed.



WARNING Do **NOT** wear the protective mask with beards or other facial hair that interferes with direct contact between the face and the edge of the mask, or any other conditions that may prevent a good face-seal.

AccuMed

Copyright © 2020 AccuMed. All rights reserved.
Designed by AccuMed, assembled in China.